

# McCULLOCH<sup>®</sup>

## ***PARTNER***

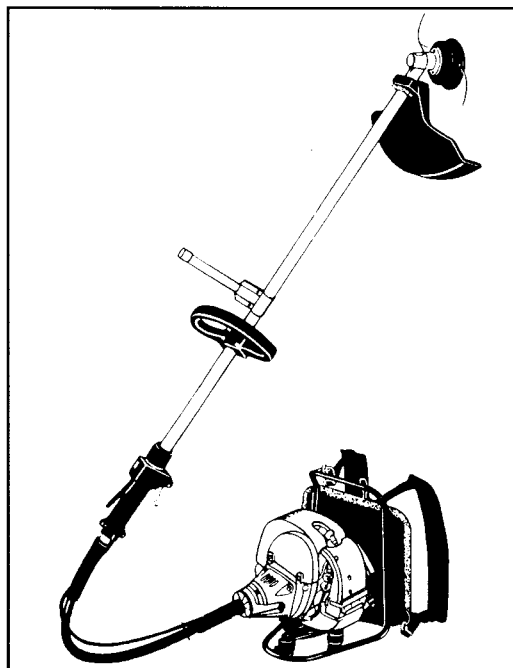
### **ILLUSTRATED PARTS LIST**

---

# ELITE 4000 BP PARTNER B400BP

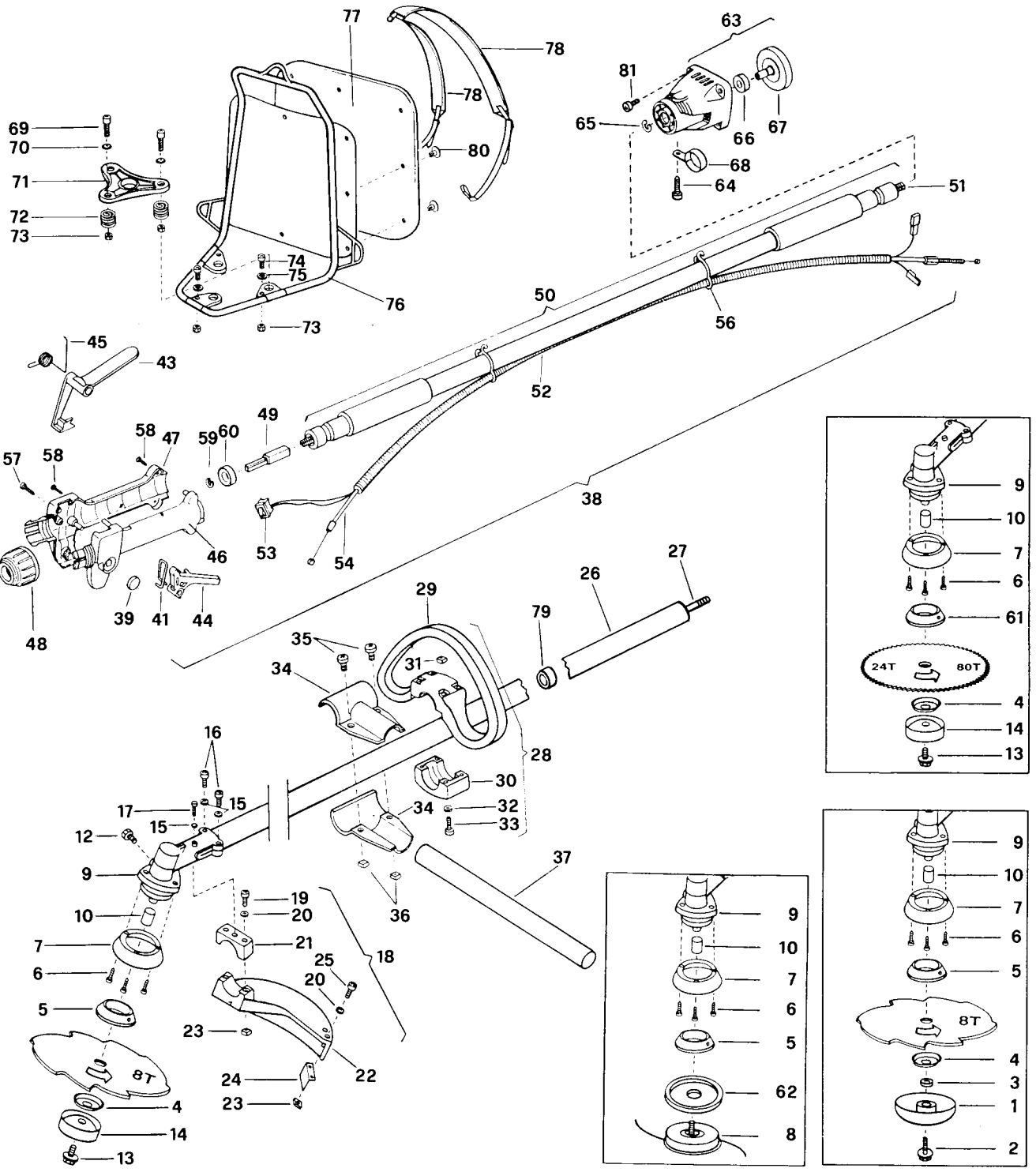
SERIAL NUMBER PREFIX 01

CE



May 1998





**FIGURE 2**

A 1	240809B	1	B 18	247209	1	34	240682	2	C 52	● 241443	1	69	229077	M5x18	3			
A 2	240806	1	19	● 235806	M5x20	2	35	235911	M6x12	2	C 53	●● 236394	1	70	227259	3		
A 3	240807	1	20	● 235248	4	36	236642	2	C 54	●● 241442	1	71	240171	1	73	240592	6	
A 4	229834	1	21	● 240870	1	37	246864	1	56	● 240200	2	72	240196	3	74	235802	M5x14	3
A 5	229833	1	B 22	● 240932	1	38	241427	1	57	● 240617	2	73	240592	6	75	227259	3	
B 7	240688	M5x14	3	23	● 236732	4	39	● 241297	1	58	● 240618	4	74	235802	M5x14	3		
A 8	240767	1	24	● 224497-01	1	41	● 235932	1	59	● 235224	1	75	227259	3	76	240172	1	
A 9	240824	1	25	● 235802	M5x14	2	43	● 240041	1	60	● 235897	1	76	240172	1	77	240229	1
10	● 247272	1	26	240828	1	44	● 240042	1	A 61	240936	1	77	240229	1	78	240246	2	
12	● 240151	M8x10	1	27	240189	1	45	● 240043	1	62	241155	1	78	240246	2	79	236383	5
A 13	229842	M10x16	1	28	236999	1	46	● 240166	1	63	241450	1	79	236383	5	80	240588	8
A 14	236596	1	29	● 236808	1	47	● 240167	1	C 65	● 236378	1	80	240588	8	81	236527	M6x16	4
15	236529	3	30	● 236809	1	48	● 240170	1	C 66	● 235918	1	81	236527	M6x16	4			
16	235804	M5x30	2	31	● 236642	4	49	● 240181	1	C 67	● 240194	1						
17	236381	M5x10	1	32	● 236936	4	50	● 240187	1	C 68	● 241480	1						
				33	● 228320	M6x45	4	C 51	●● 240185	1								

A = high moving - alta rotazione - haute demande - große Nachfrage B = medium moving - media rotazione - moyenne demande - mittelmäßige Nachfrage C = slow moving - bassa rotazione - basse demande - wenige Nachfrage

